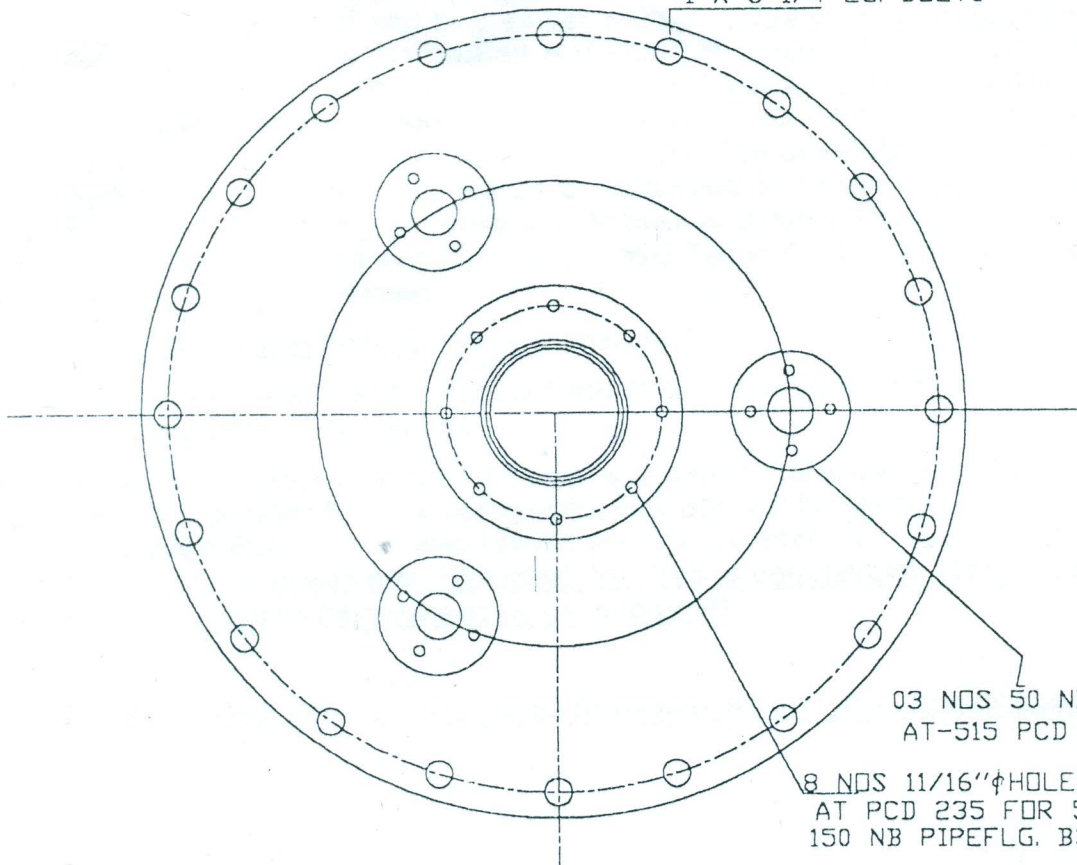


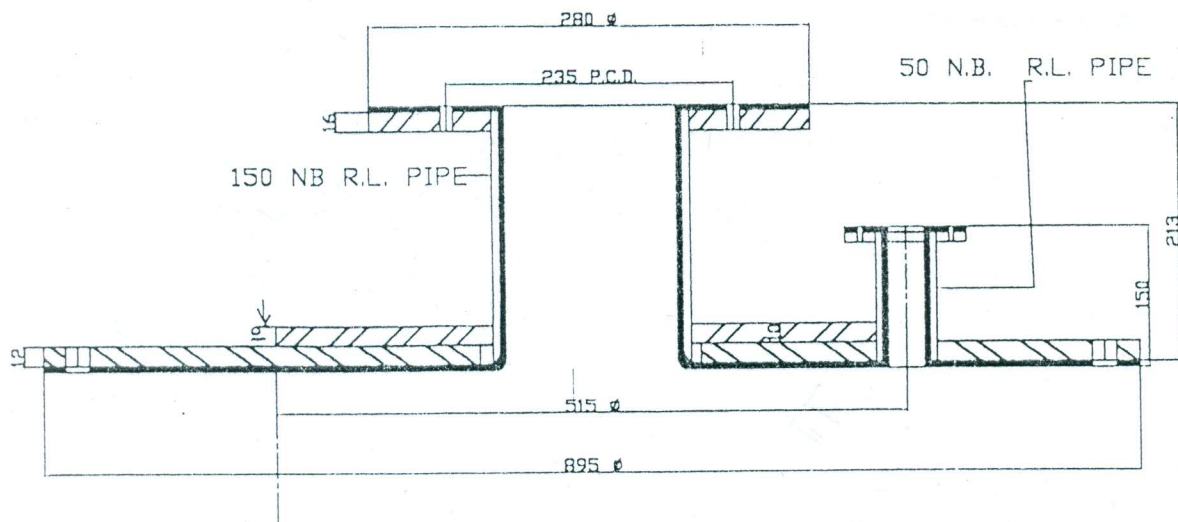
4/022/009/234

20 NOS 1 1/8" HOLES AT PCD 838 FOR  
1"X 3 1/4" LG. BOLTS



03 NOS 50 NB NIPPLE  
AT-515 PCD FLG.BS-10TAB-D

8 NOS 11/16"  $\phi$  HOLES  
AT PCD 235 FOR 5/8" BOLTS  
150 NB PIPE FLG. BS-10 TAB -D



1 WELDING GROUND TO RADIUS FOR R.L.

2 5MM THIK R.LINING; C HARDNESS  $45 \pm 5$  SHORE -A  
TENSILE STRENGTH -180 Kg/Cm<sup>2</sup> ASH CONTAIN 10% MAX.

3 ALL PIPES SHOULD IS-1239 PART-1 "C" CLASS

DESIGNED BY ANJANI

APPROVED BY AB

BOTTOM FLANGE WITH NOZZLE FOR PACHUCAS

URANIUM CORPORATION OF  
INDIA

DRG.NO-UCI-M- 738 /B REV-B