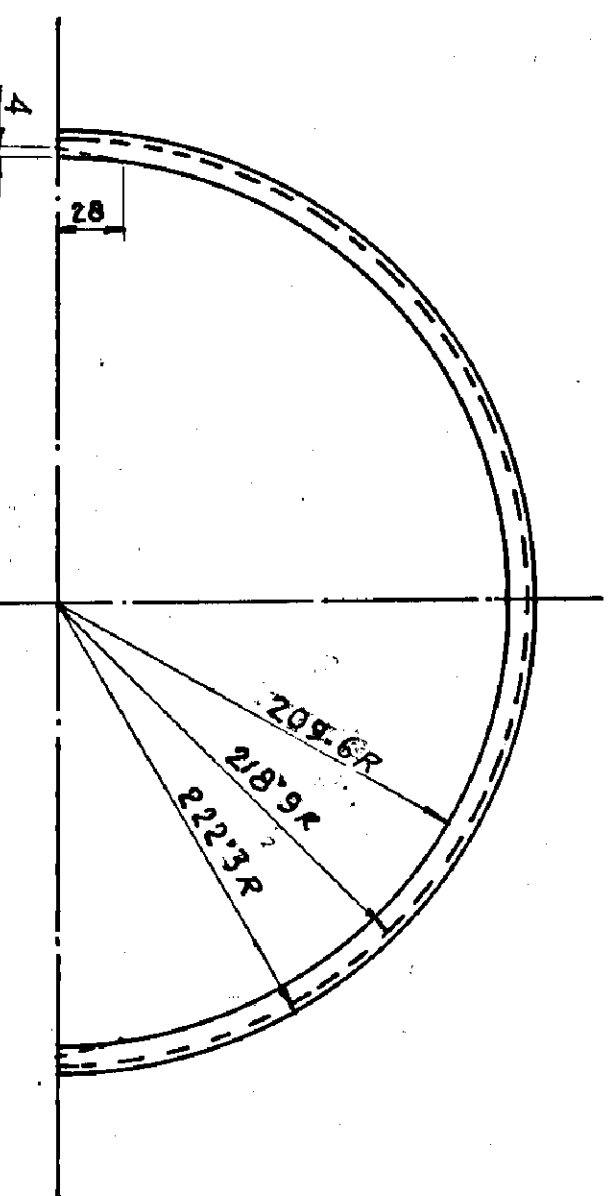
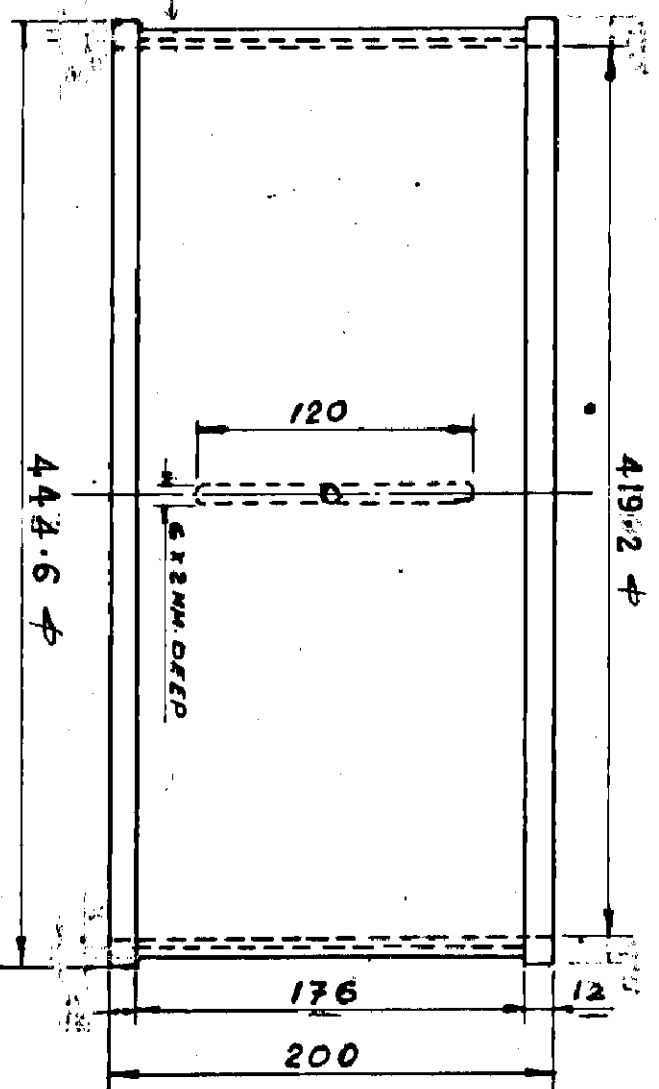


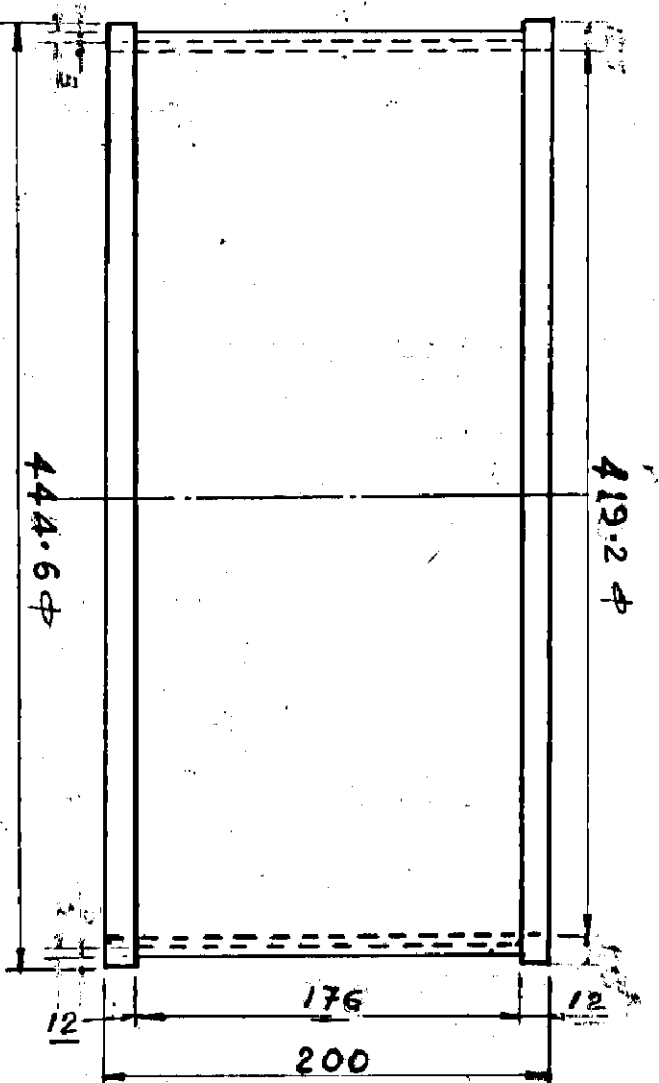
ELEVATION



ELEVATION



PLAN



PLAN

MATERIAL - PHOSPHORUS BRONZE

COPPER - 90%

TIN - 9.7%

PHOSPHORUS 0.3%

MATERIAL COMPOSITION IS GIVEN ON 4.3.76. HENCE THE DRAWING IS REVISED

UNDER LINED DIMENSIONS ARE REVISED ON 12.3.78

URANIUM CORPORATION OF INDIA LTD. JADUGUDA

(A GOVT. OF INDIA, DEPARTMENT OF ATOMIC ENERGY ENTERPRISE)

TRACED *W. K. S.* 23.5.72

DRAWN *W. K. S.* 23.5.72

CHECKED *W. K. S.* 15/1/73

APPROVED *W. K. S.* 15/1/73

URANIUM BEARING LINER FOR

DRUM FILTER

SCALE NTS 1:100

PROJECTION

DRG. NO. UCI/M554/E

REVISION B-A