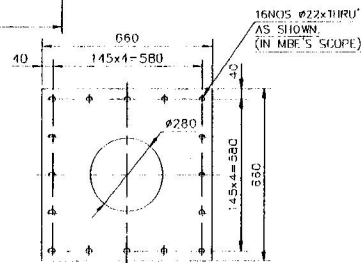
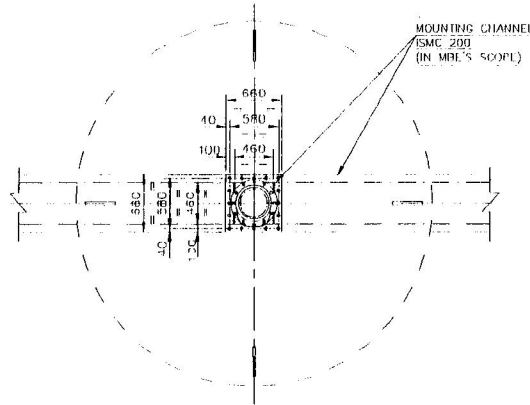


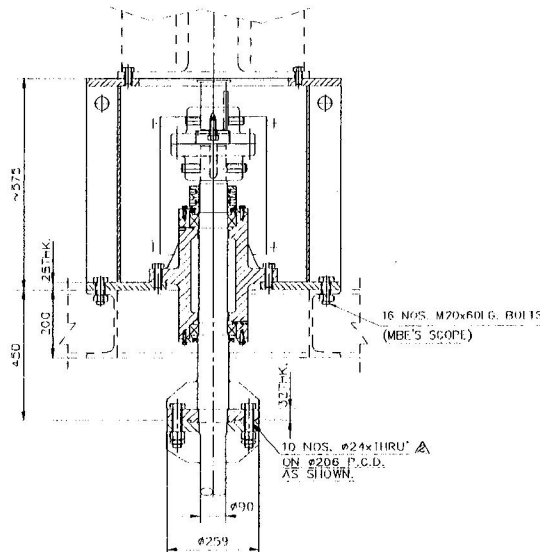
ELEVATION



MOUNTING PLATE DETAILS



PLAN



DETAIL AT 'P'

FOR TAILING THICKENER U/F TANK

MIXER QTY.-1 NO.

NOTES :

- ON IMPELLER & SHAFT.
- # DISTANCE BETWEEN LIQUID LEVEL & MOUNTING PLATE TO BE MAINTAINED BY MBE.
- # AGITATOR MOUNTING FASTENERS & GASKET ARE IN MBE'S SCOPE.
- # ALL INTANK (WETTED) HARDWARES WILL BE IN SS-316
- # SHAFT DEFLECTION 1 MM PER METER.
- # PARALLELITY OF AGITATOR MOUNTING PLATE SHOULD BE LESS THAN 1 MM PER METER DIAMETER.
- # AFTER ERECTION & ALIGNMENT, RUBBER CAP SHALL BE PROVIDED ON ALL INTANK HARDWARE.

1	THIS DRAWING IS NOT TO SCALE
2	DIMENSIONS ARE IN
3	MATERIAL OF IN - TANK MIXER PARTS
4	IMPELLER BLADES
5	TANK Baffles (BY MBE)
6	IMPELLER SPEED (REV/MIN)
7	NUMBER OF BLADES (TYPE)
8	UPPER IMPELLER
9	LOWER IMPELLER
10	CRITICAL SPEED (REV/MIN)
11	IMPELLER ADJUSTMENT
12	LOWER IMPELLER
13	(IMPELLER HUBS ARE WELDED TO SHAFT AND BLADES ARE BOLTED TO HUBS)
14	MOTOR - TFC/HPSS/VERTICAL FLANGE MOUNTED/STD SPEED (REV/MIN)
15	FRAME (Vph/hr)
16	GEAR BOX: M1020/30.76.1/P1600/V1/PBL MAKE
17	FLEXIBLE COUPLING: PIN & BUSH TYPE LOVEJOY MAKE
18	RIGID COUPLING: (LIGHTNIN DESIGN)
19	DESIGN DATA
20	DOWNWARD LOAD
21	TORQUE
22	BENDING MOMENT
23	DESIGN LOADS ARE GREATER THAN ACTUAL LOADS BY A SUITABLE FACTOR CONSISTENT WITH CONSTRUCTION CODES AND LIGHTNIN EXPERIENCE
24	LIGHTNIN SHALL APPROVE THE AGITATOR MOUNTING DETAIL DIMENSIONS MBE TO DESIGN THE SUPPORT STRUCTURE BASED ON LOADS ON THE STRUCTURE PROVIDED IN THIS DRAWING.
25	FORCE ON EACH Baffle
26	FOR Baffle DESIGN CALCULATED LOAD TO BE CONSIDERED AS A POINT LOAD ACTING AT THE INNER EDGE OF THE Baffle OPPOSITE THE IMPELLER CENTRE LINE.
27	THE LOAD IS A LINE LOAD & FLUCTUATING COMPONENT BE CONSIDERED TO BE ACTING ABOUT THE SAME POINT AS DETAILED ABOVE. THE MAGNITUDE OF THIS FLUCTUATING COMPONENT IS TO BE CONSIDERED AS 50% OF THE CALCULATED LOAD.
28	Baffle DESIGN IS THE RESPONSIBILITY OF THE VESSEL MANUFACTURER.
29	MIXER WEIGHT
30	GEAR BOX
31	MOTOR
32	SHAFT/IMPELLERS/COUPLING/LANTERN/BRIGHTS
33	TOTAL

HORIZONTAL LOAD = 1556 N.  
VERTICAL LOAD = 5250 N.

EXECUTOR	MCNALLY BHARAT ENGG. CO. LTD.
CUSTOMER	URANIUM CORPORATION OF INDIA LTD.
RLML C.O.No.	604
MBE'S P.O.No.	14482 ; SO-07913
DATED :	25/09/2008
RATHI LIGHTNIN MIXERS PVT LTD.	
1162/2 SHIVAJINAGAR,BEHIND OBSERVATORY,PUNE-411 005 (INDIA)	
EQUIPMENT TAG NO.274G-12	
G.A.FOR AGITATOR ASSEMBLY : RLGHQ-15	
REFERENCE Dwg. No.	
REPLACES Dwg. No.	
SCALE	1:30
DRAWING No.	000006040003
REV.	3
SHEET	1 OF 1

REV	ZONE	DATE	DESCRIPTION	SIGN	REV	ZONE	DATE	DESCRIPTION	SIGN
1		03.12.2008	DRAWING REVISED AS PER CLIENT'S COMMENT.	RRK					
2		07.11.2008	DRAWING REVISED AS PER CLIENT'S COMMENT.	RRK					